



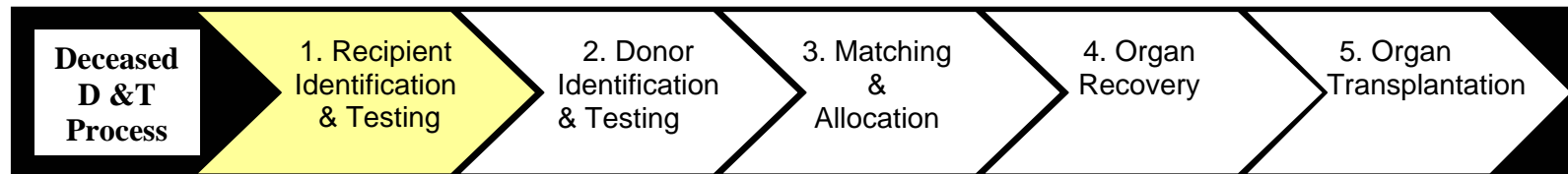
Canadian Blood Services  
Soci t  canadienne du sang

## Organ Donation and Transplantation Process Flows

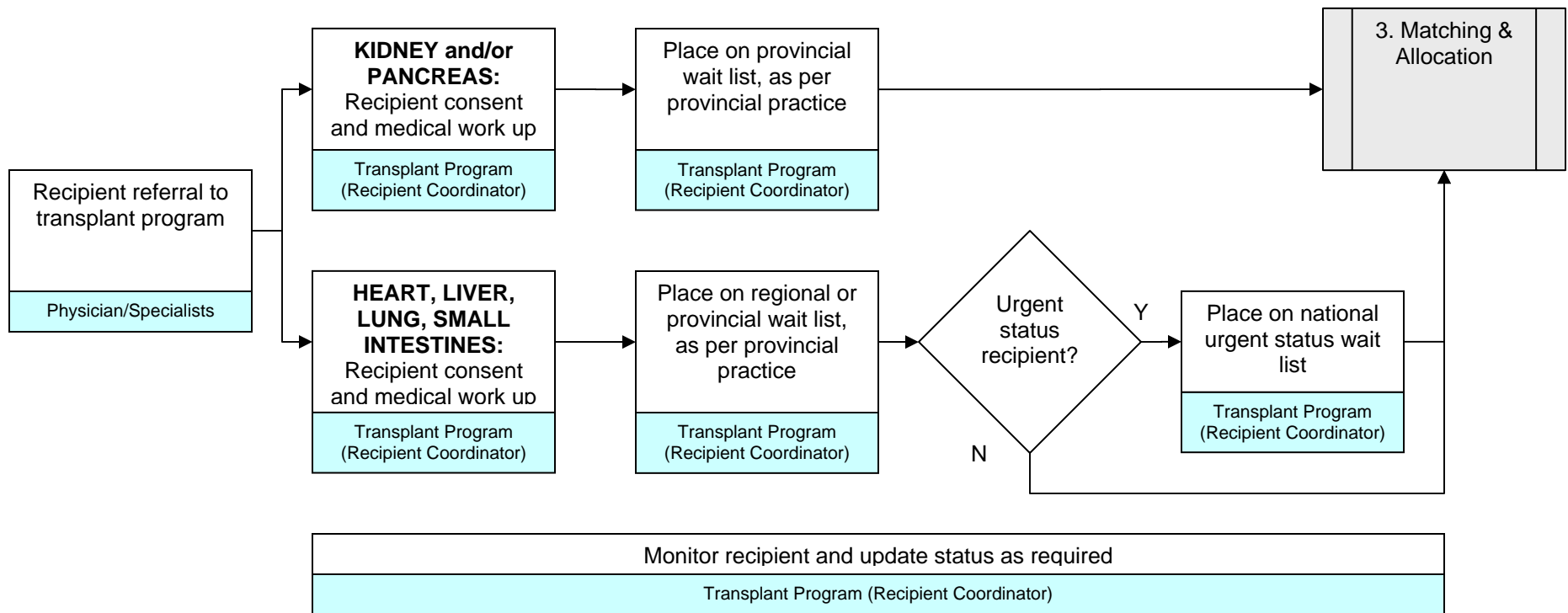
### Deceased Donation and Transplantation Process

1. Recipient Identification & Testing.....	2
2. Donor Identification & Testing .....	3
3. Matching & Allocation .....	4
4. Organ Recovery .....	5
5. Organ Transplantation .....	6
Living Donation and Transplantation Process.....	7
Provincial Variations.....	8

# Deceased Donation and Transplantation Process

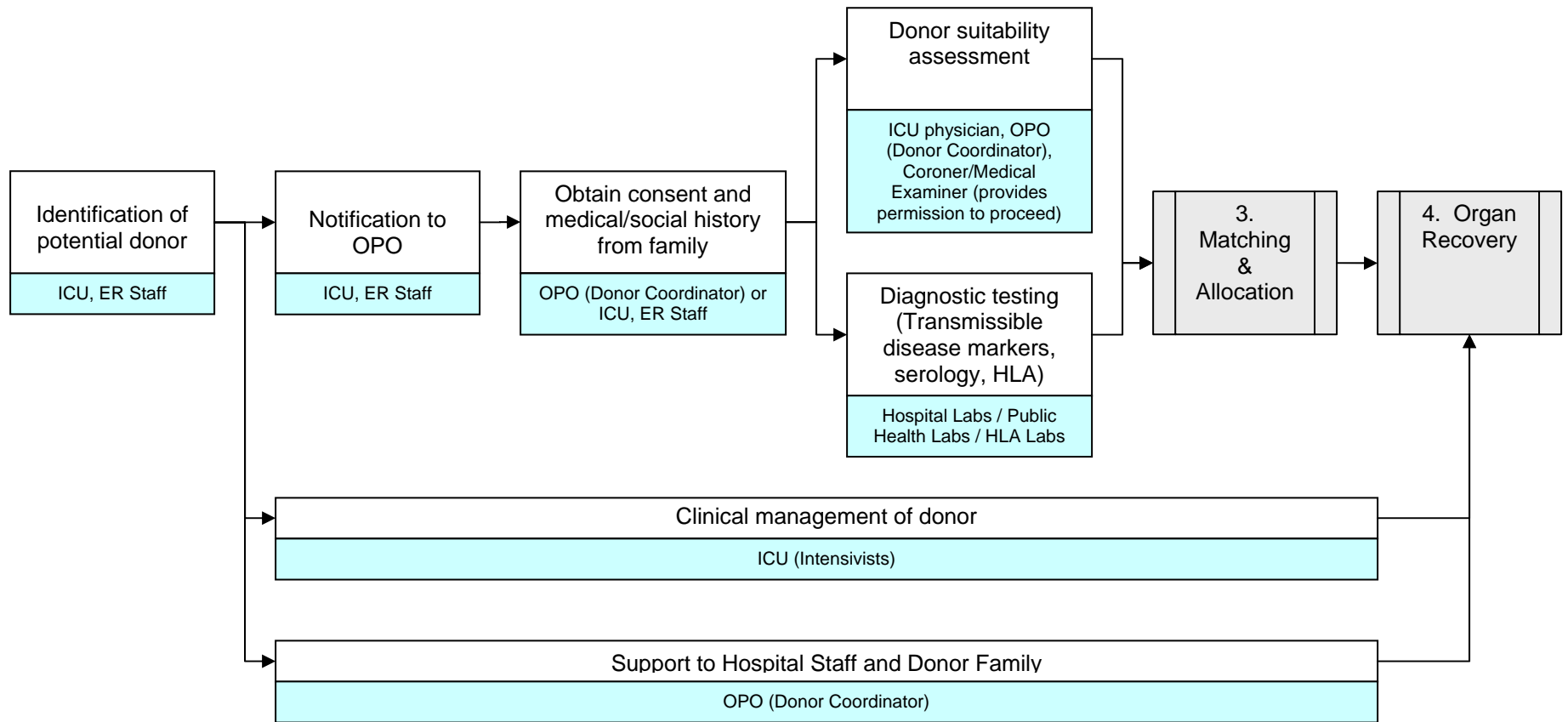


## 1. Recipient Identification & Testing



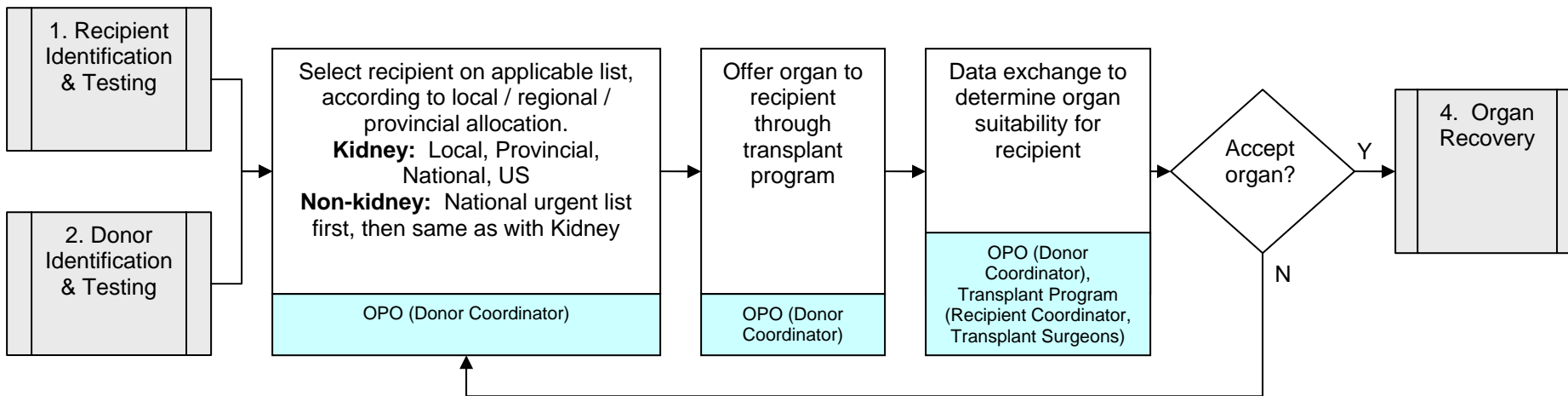


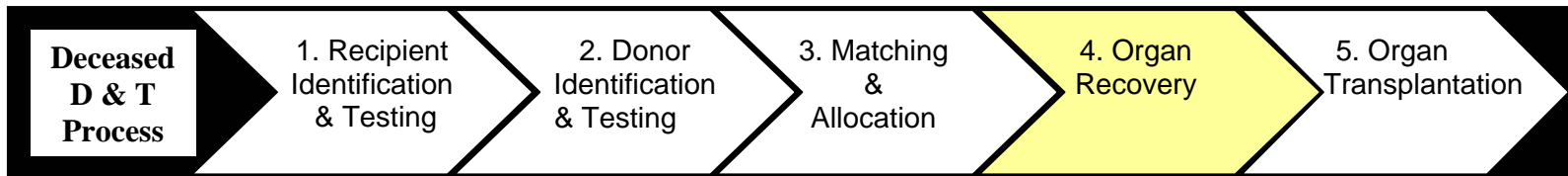
## 2. Donor Identification & Testing



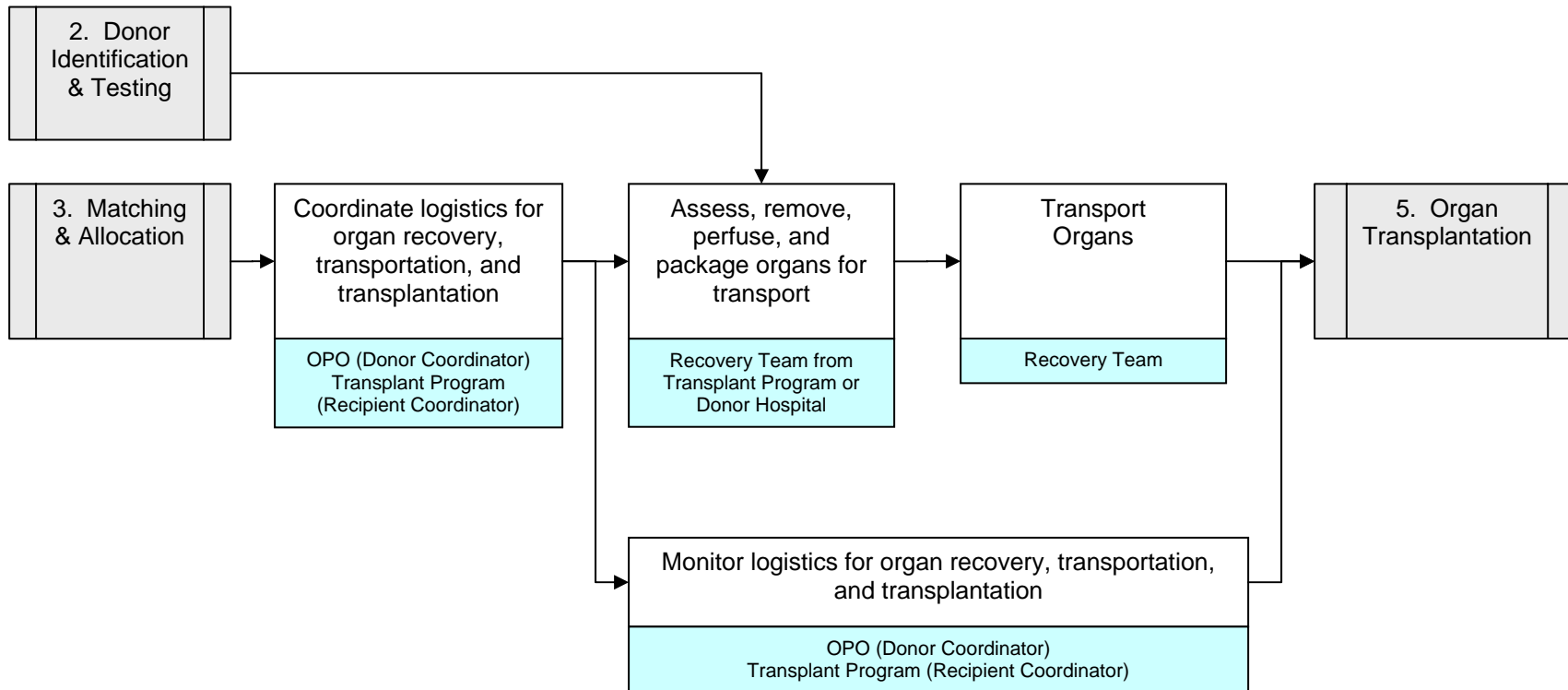


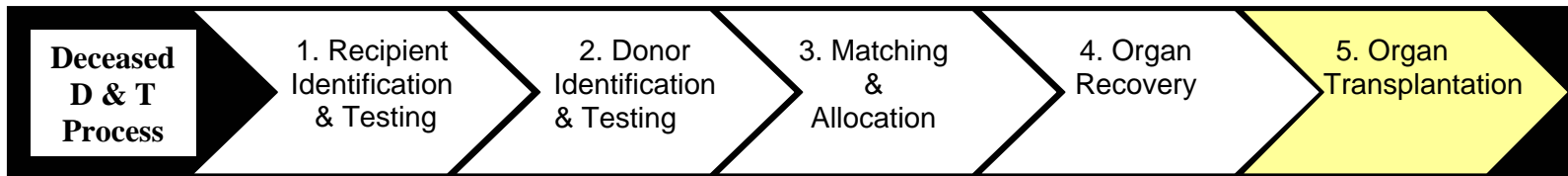
### 3. Matching & Allocation



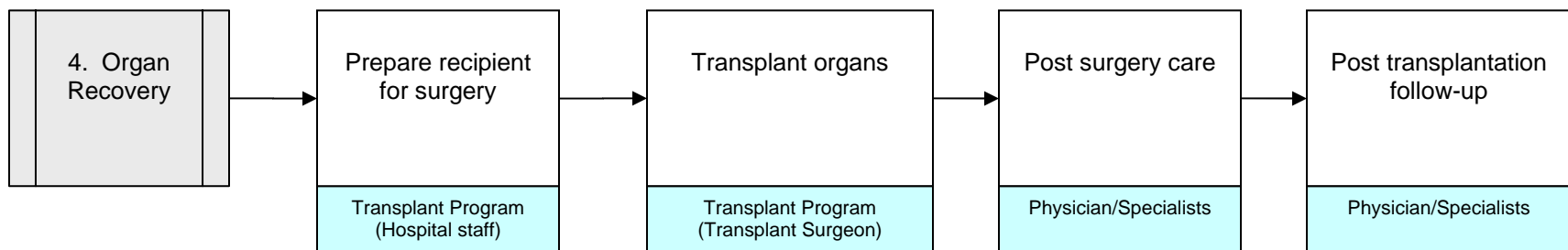


## 4. Organ Recovery

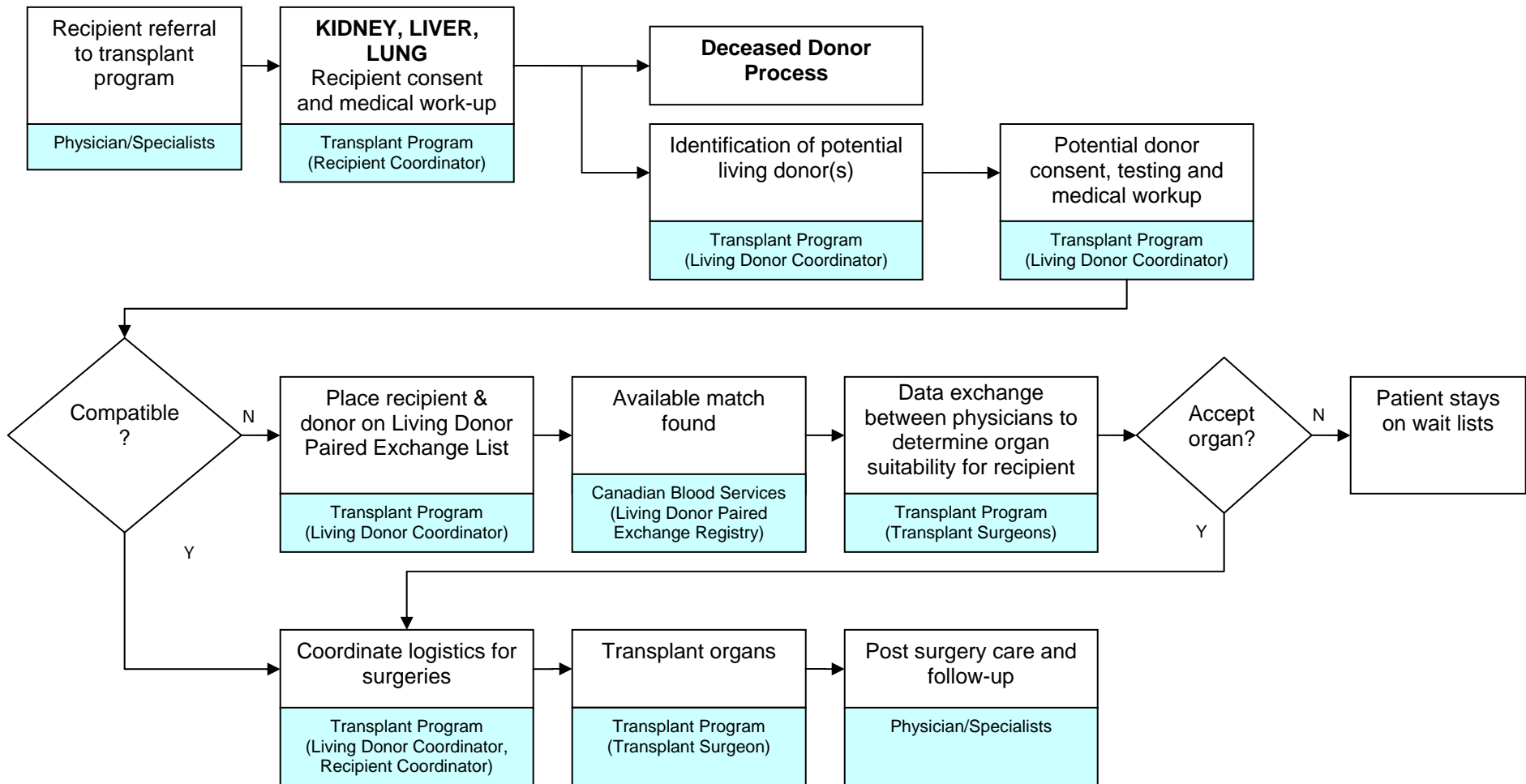




## 5. Organ Transplantation



# Living Donation and Transplantation Process



# Provincial Variations

	Mandatory Request to Family	Mandatory Referral to OPOs	Kidney Wait List	Non-Kidney Wait List	Intent/Consent to Donate	Living Donor Expenses Reimbursement
<b>BC</b>	No	Yes	Operated by BC Transplant	Operated by BC Transplant	Web-based registry	Living Organ Donor Expense Reimbursement Program (LODERP), administered by Kidney Foundation- covers travel and travel expenses, loss of income, max \$5500/transplant
<b>AB</b>	No	No (may change with new tissue gift act)	Operated by Local OPOs: HOPE North, HOPE South	Operated by organ-specific transplant programs	Linked to Provincial Health Card	No program
<b>SK</b>	No	No	Operated by Saskatchewan Transplant Program	Patients placed on transplant program wait list in other provinces	Linked to Provincial Health Card	No program
<b>MB</b>	No	Yes	Operated by Transplant Manitoba	Operated by organ-specific transplant programs	Linked to Provincial Health Card	Program administered by Kidney Foundation- covers travel and travel expenses, loss of income, max \$5500/transplant
<b>ON</b>	No	Yes	Operated by Trillium	Operated by Trillium	Web-based registry	Program for Reimbursing Expenses of Living Organ Donors (PRELOD); administered by Trillium; covers travel and travel expenses, loss of income, max \$5500 lifetime
<b>QC</b>	No	No	Operated by Québec Transplant	Operated by Québec Transplant	Linked to Provincial Health Card	No program
<b>NB</b>	Yes	No	Operated by Capital Health Multi Organ Transplant Program	Operated by Capital Health Multi Organ Transplant Program	Linked to Provincial Health Card	Yes, covers travel
<b>NS</b>	Yes	No	Operated by Capital Health Multi Organ Transplant Program	Operated by Capital Health Multi Organ Transplant Program	Linked to Health Card. Also has a web-based registry	No
<b>PEI</b>	No	No	Operated by Capital Health Multi Organ Transplant Program	Operated by Capital Health Multi Organ Transplant Program	Linked to Provincial Health Card	Yes, covers travel
<b>NL</b>	No	No	Operated by Capital Health Multi Organ Transplant Program	Operated by Capital Health Multi Organ Transplant Program	Linked to Provincial Health Card	Yes, covers travel and travel expenses
<b>NATL</b>	N/A	N/A	National Living Pair Donor Paired Exchange operated by Canadian Blood Services	National urgent status wait list currently operated by London Health Sciences Centre; new system being developed by Canadian Blood Services	None	None